



Photo 1-1



Photo 1-2



Photo 1-3



Photo 2-1



Photo 2-2

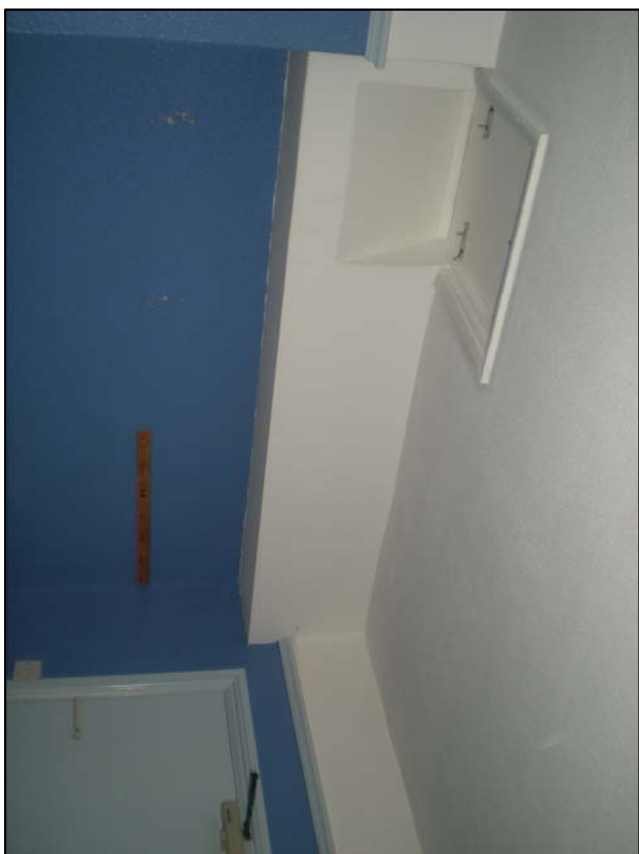


Photo 2-3

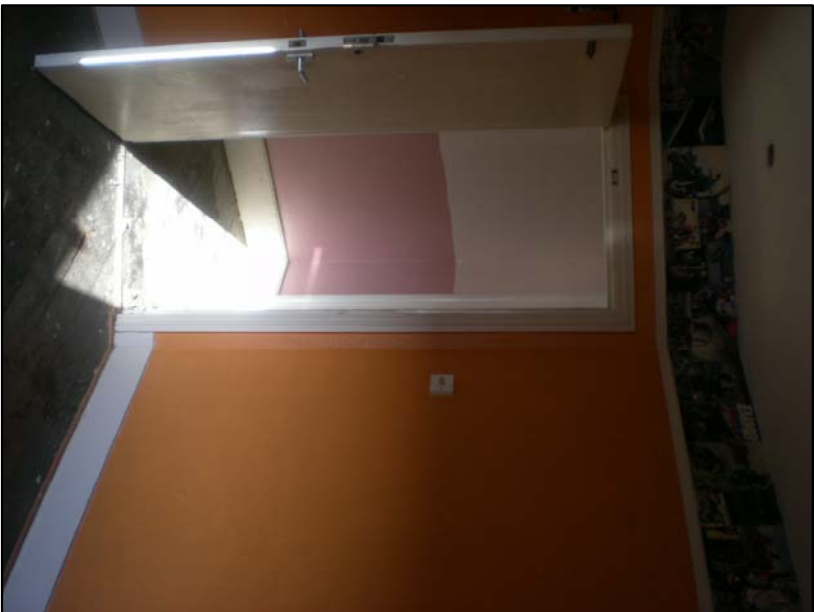


Photo 4-1

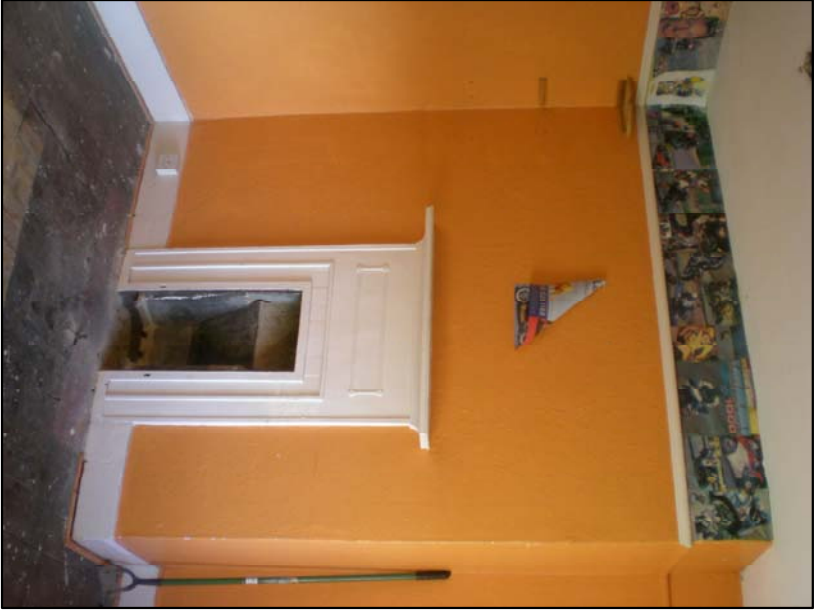


Photo 4-2



Photo 4-3

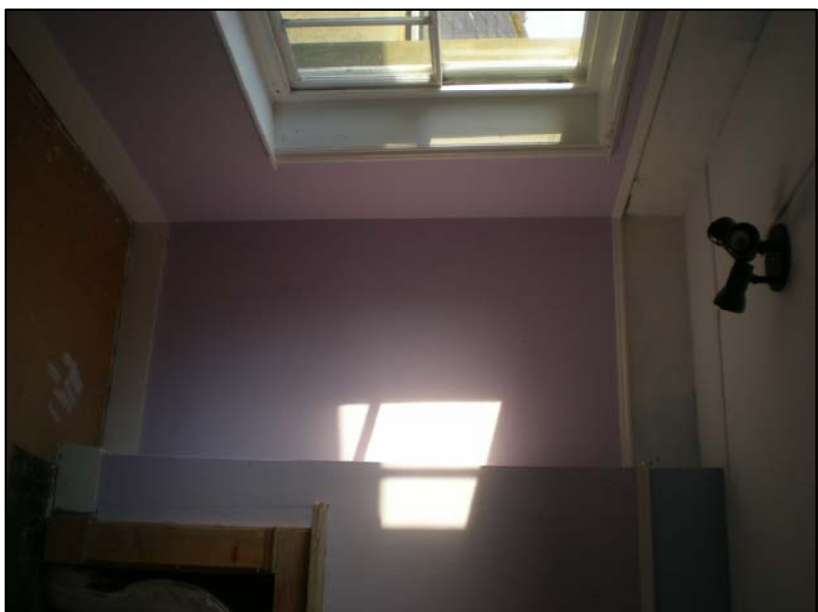


Photo 3-1



Photo 3-2



Photo 3-3



Photo 5-1



Photo 5-2



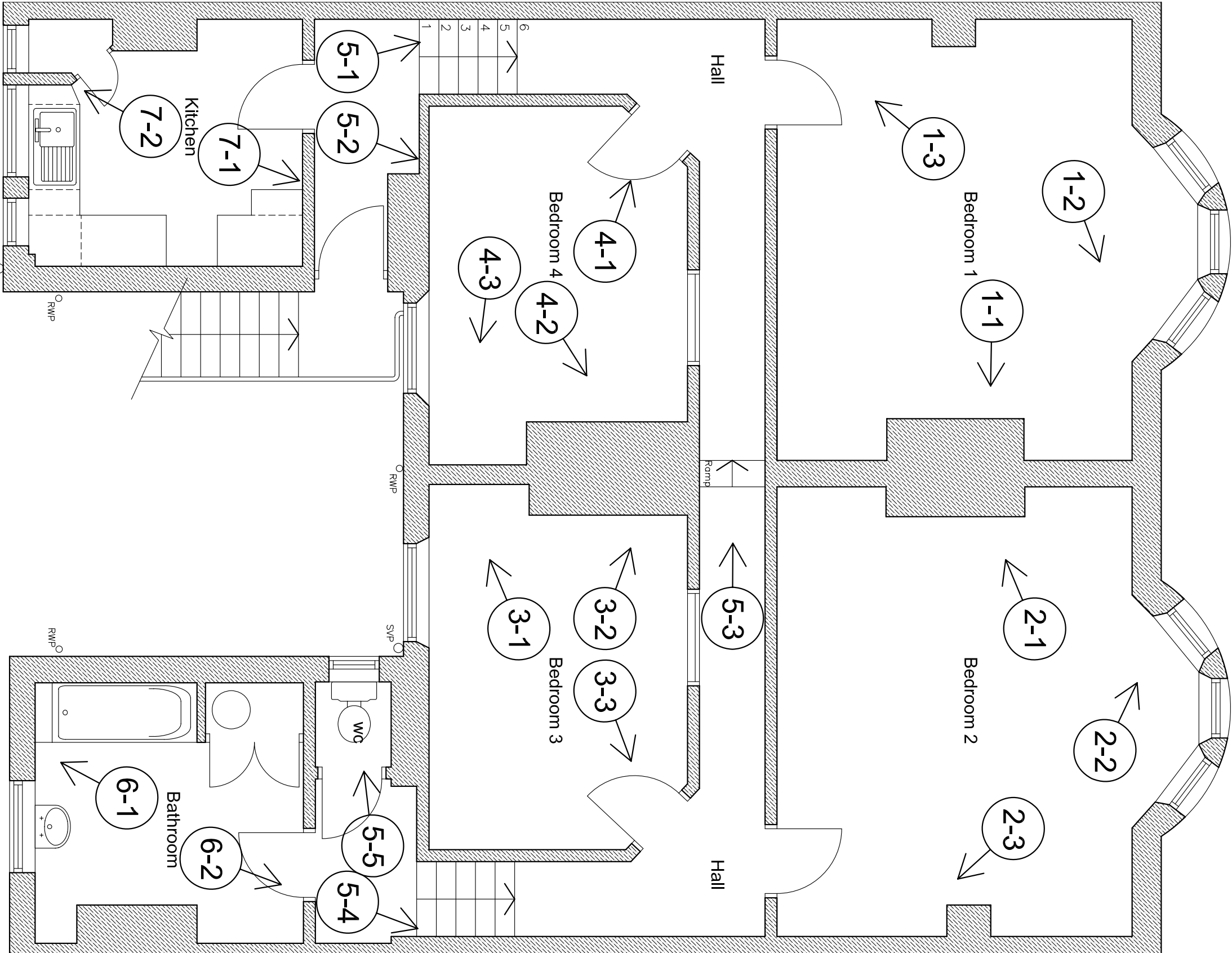
Photo 5-4



Photo 5-5



Photo 5-3



EXISTING SECOND FLOOR PLAN

Scale 1:50

Kitchen
Existing skirtings, square edged timber boards – finish pointed
Existing picture rail, molded timber – finish pointed
Existing architraves, molded timber – finish pointed
Doors – pointed flush door
Windows – timber sash, timber fixed and steel bottom hung
Floor, square edged boards
Walls – pointed and tiled finish
Ceilings – smooth – pointed finish
Fireplace – the chimney breast has brick slips fixed to it and the place is open

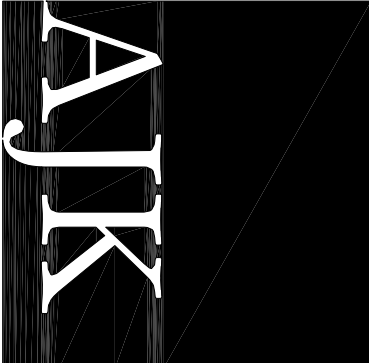
Bedroom 1
Existing skirtings, square edged timber boards – finish pointed
Existing picture rail, molded timber – finish pointed
Existing architraves, molded timber – finish pointed
Door, flush door – pointed finish
Windows, sliding sash timber – finish pointed
Walls, lining paper – pointed finish
Ceilings, oiled textured skim – pointed finish
Fire place, plain with brick surround and timber mantelpiece

Bedroom 2
Existing skirtings, square edged timber boards – finish pointed
Existing picture rail, molded timber – finish pointed
Existing architraves, molded timber – finish pointed
Windows, sliding sash timber – finish pointed
Floor, square edged boards – plain finish
Walls, wood chip paper – pointed finish
Ceilings, oiled textured skim – pointed finish
Fire place, built in with fire place boarded over – finish pointed
Built in cupboard – surround molded timber with pointed finish, doors missing.

Bedroom 3
Existing skirtings, square edged timber boards – finish pointed
Existing picture rail, molded timber – finish pointed
Existing architraves, molded timber – finish pointed
Windows, sliding sash timber – finish pointed
Borrowed Light, molded timber – finish pointed
Floor, square edged boards – oiledboarded finish
Walls, square edged boards – oiledboarded finish
Ceilings, insulation board with battened joists – pointed finish
Fire place, built in with fire place exposed – varnished finish

NOTES:
Do not scale the drawing.
The drawing is copyright. No other use or reproduction is allowed without the consent of Adams Johns Kennard Ltd.
Where, however, a local authority, acting in accordance with the provisions of the Building Regulations 1988, issues copies of this drawing, only the complete drawing may be so copied and issued and the identity of the drawing user, Adams Johns Kennard, must be clearly shown.

REVISIONS:



LISTED BUILDING CONSENT

Adams Johns Kennard Ltd
Riverside
51 Leominster-on-Sea
East Sussex TN38 0DX
Tel: 01424 722024
Fax: 01424 722025
Email: archibet@ajk.co.uk

The Charles Jewell Centre
56 - 58 Seaside
Eastbourne

Existing Condition Survey
Second Floor

Scale	1:50	Drawn	ph
Date	Mar 2010	Authorised	
Dwg No.	ESC2505-109	Rev	